

38

SCOTTSBURG BRIDGE

Open House

Oregon 38: Scottsburg Bridge Replacement Project



August 20, 2019

The new bridge

The old Scottsburg Bridge was opened in 1929, when most vehicles were small and speeds low. The bridge's narrow lanes and tight corners at both ends are less than ideal for modern traffic.

In 2017, the Oregon Legislature approved \$42,848,000 in funding to replace the Scottsburg Bridge. This includes:

- Design: \$2,968,000
- Right of Way: \$1,380,000
- Utility Relocation: \$300,000
- Construction: \$38,200,000

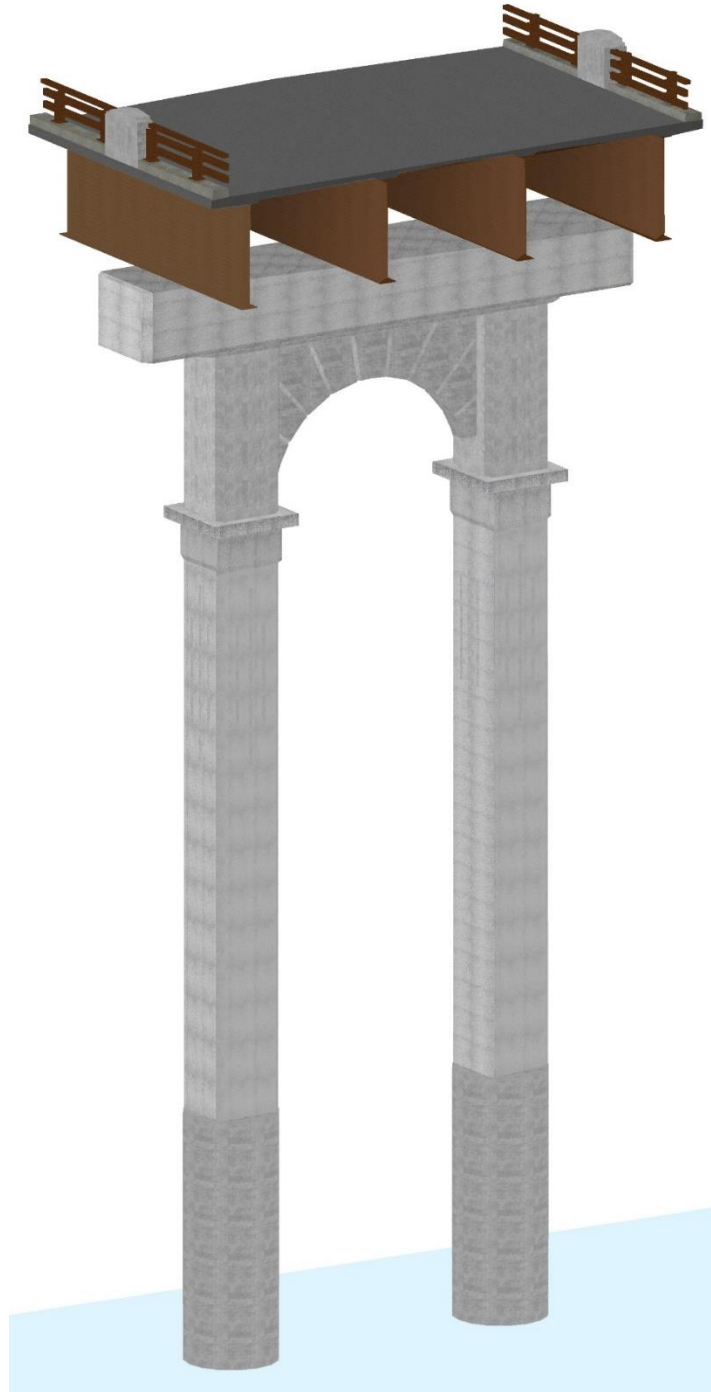
The new bridge will be located just downriver from the original bridge. The bridge will be 1,280 feet long, carrying two 12-foot travel lanes with 10-foot shoulders. It will be higher than the existing bridge to better withstand floods.

To help protect the bridge from natural disasters, a rockfall berm will be constructed at the south end and a rockfall basin will be constructed on the north end.

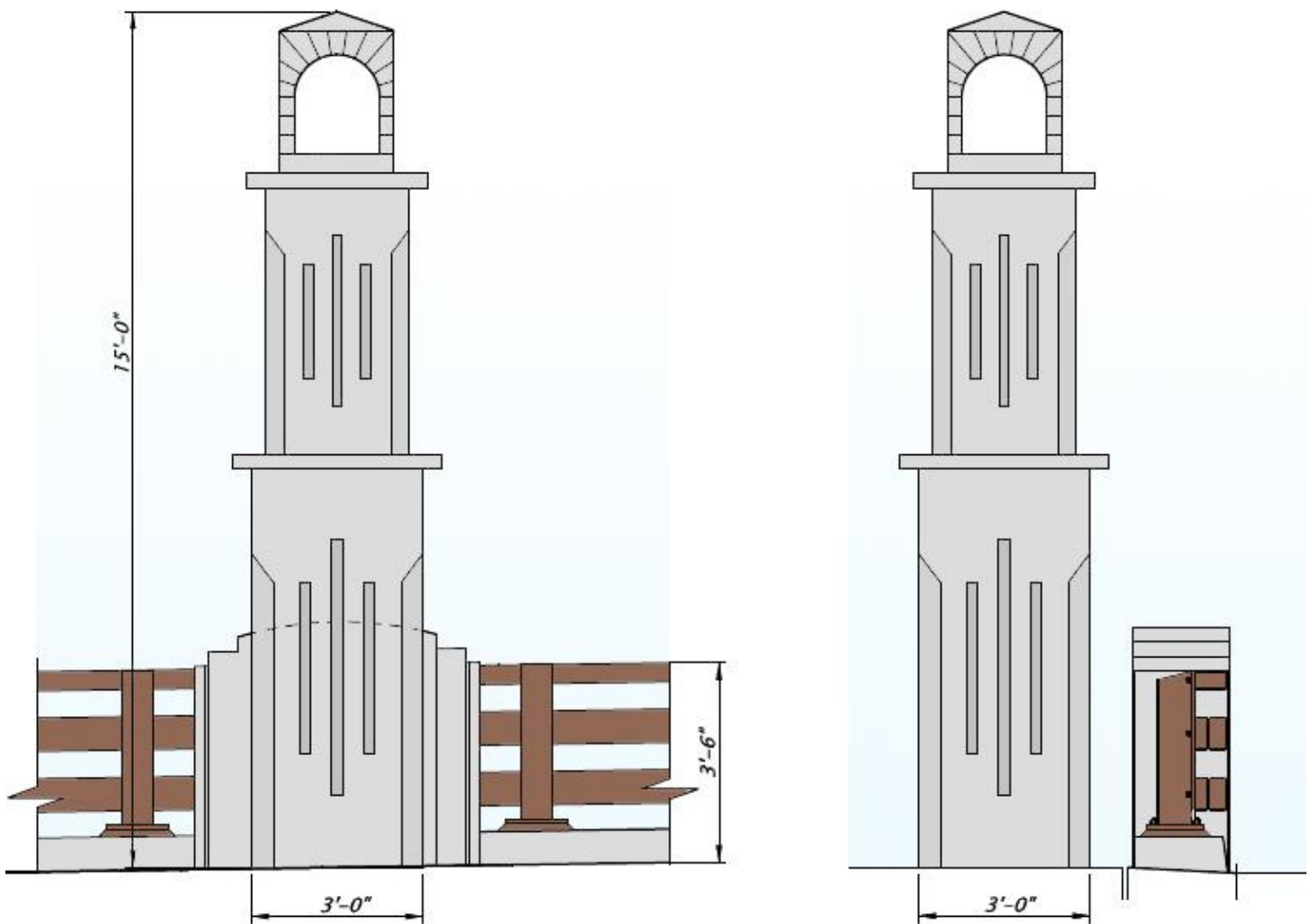
38

SCOTTSBURG BRIDGE

What will the bridge look like?



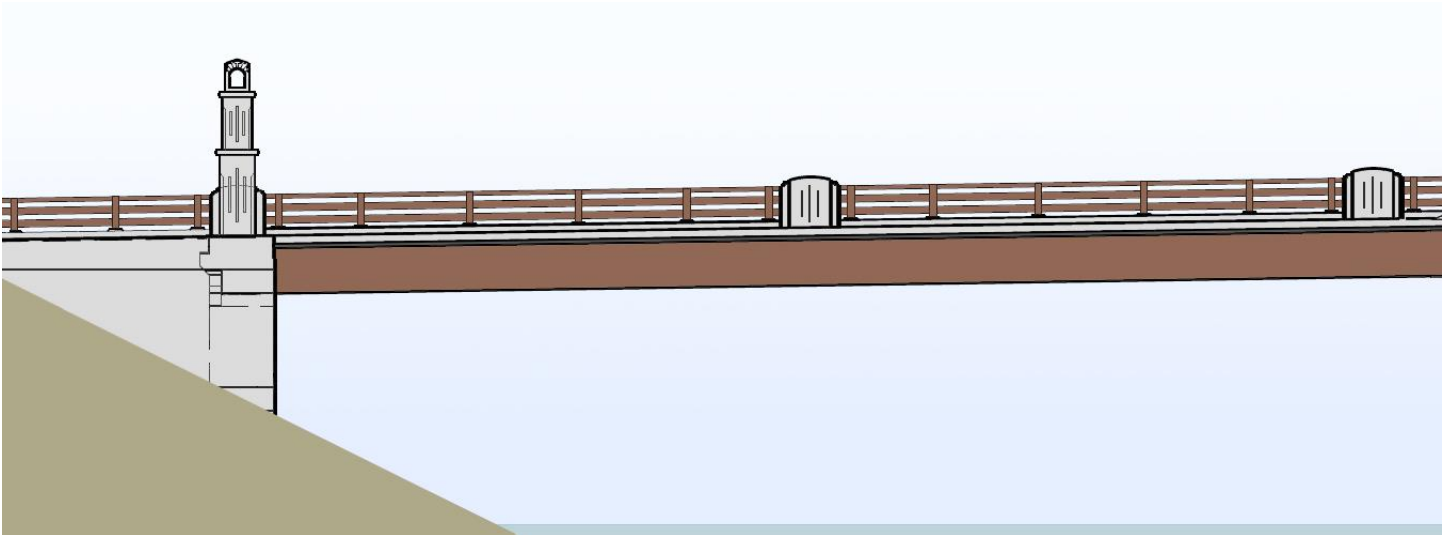
New decorative pylons



38

SCOTTSBURG BRIDGE

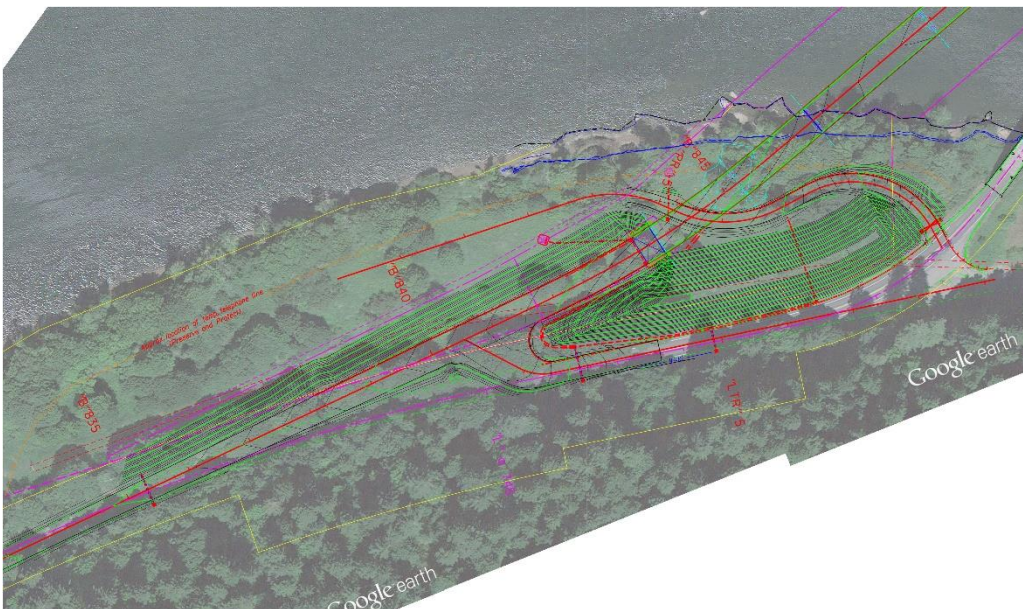
Side view of new bridge



Rockfall Basin (north bank)



Rockfall Berm (south bank)



What is the timeline for construction?

The contractor will determine the final construction schedule. However, the project will likely follow these major milestones:

- **November 21, 2019:** Project bids
- **February 2020:** Construction likely to begin.
- **Spring/Summer 2020:** Contractor likely to build work platforms in the river and begin ground-strengthening work on north and south banks of river.
- **Summer 2020-Spring 2022:** Bridge construction
- **March 2022:** Traffic scheduled to move onto new bridge
- **March-September 2022:** Demolish and remove old bridge

What will happen to the old bridge?

Since it would be too costly to maintain two bridges at this location, ODOT will remove the old bridge when the new one is opened. Most decommissioned bridges are demolished. But since the Scottsburg Bridge was built in 1929 and is considered historic, ODOT first attempted to find it a new home.

In June and July 2018, ODOT ran 32 newspaper advertisements in the four largest newspapers in southern Oregon. Unfortunately, there were no volunteers to relocate the bridge.

Therefore, the old bridge and piers will be dismantled and removed when traffic is switched onto the new bridge. All materials will become the property of the contractor.

Historic Bridge Available For Relocation & Repurposing

The Umpqua River (Scottsburg) Bridge (#01318)
Scottsburg, Douglas County, Oregon Department of Transportation

All interested persons are hereby given notice that the Oregon Department of Transportation (ODOT) is interested in donating the historic Umpqua River (Scottsburg) Bridge (#01318) in Scottsburg to any private or public party willing and able to relocate and maintain the structure at another site. The bridge is becoming obsolete. A modern two-lane bridge will replace it. ODOT is offering the Scottsburg Bridge on an "as-is" basis and does not state or imply any warranty as to its structural soundness.

The existing Scottsburg Bridge over the Umpqua River is a two-lane steel truss bridge constructed in 1929 by the Oregon State Highway Department (a precursor to ODOT) under the leadership of famous bridge engineer, Conde B. McCullough. The Scottsburg Bridge is a one 632-ft three-span continuous humpback Warren through truss with reinforced concrete deck girder approach spans. It was previously identified as eligible for listing in the National Register of Historic Places.

Those interested in assuming ownership of the Scottsburg Bridge and moving it to another site must submit written statements of interest to: Larissa Rudnicki, Oregon DOT, 4040 Fairview Industrial Drive MS #6, Salem, OR 97302. ODOT must receive statements of interest no later than August 15, 2018. For more information, including as-built plans and potential grant opportunities, please contact Larissa at 503.986.6782 or Larissa.Rudnicki@odot.state.or.us.

Statements of interest must include the following: 1) proposed use for the bridge; 2) location map, site plan, and photograph(s) of proposed location; and 3) specific plans for hauling, and re-erecting the bridge. Project funding will cover up to \$1.3 million of the costs to remove, relocate, and re-erect the bridge. The bridge's recipient must cover all additional expenses over the available funds to cover these costs. ODOT will send desirable and feasible proposals to the Federal Highway Administration and the Oregon State Historic Preservation Office for review and approval. ODOT will only consider proposed uses that conform to the US Secretary of the Interior's "Standards for Rehabilitation of Historic Properties."

ODOT will give preference to respondents who can relocate the Scottsburg Bridge within the construction contract's time frame, anticipated summer, and whose proposals demonstrate a commitment to maintaining the bridge and the features that give the historic bridge its historic significance at the publicly accessible site. The recipient must also agree to assume all future legal and financial liability for the bridge's operation and use of the historic bridge at its new location.

July 1, 4, 8, 11, 15, 18, 22, & 25, 2018

How will construction affect traffic?

The old bridge will remain in use until the new bridge is completed and there will be long periods when traffic on Oregon 38 is not affected. However, there will be times when motorists should expect lane closures.

Traffic signal: For approximately six consecutive months, the bridge will be limited to a single lane with a temporary signal providing traffic control.

Flaggers: For several other weeks, the bridge will be limited to a single lane with flaggers providing traffic control.

Scottsburg West Road: The spur from Oregon 38 to Scottsburg West Road located at the north end of the bridge will be closed for most of construction. During this time, all residents along Scottsburg West Road will use Main Street to reach Oregon 38.



How can I get more information?

ODOT will provide e-mail updates during construction. Learn more at www.ScottsburgBridge.com.

For questions or comments, please contact:

Dan Latham
Oregon Department of Transportation
3500 NW Stewart Parkway
Roseburg, OR 97471

Dan.Latham@odot.state.or.us
541-957-3601

Thank you for visiting our open house!